

S.W. COR. SEC 7, T 18N, R 66W 062653

RECEIVED  
LARAMIE COUNTY  
CHEYENNE, WY.

CERTIFIED LAND CORNER RECORDATION

OCT 5 PM 3 02

DESCRIPTION OF CORNER EVIDENCE FOUND, AND ORIGINAL RECORD (If known)

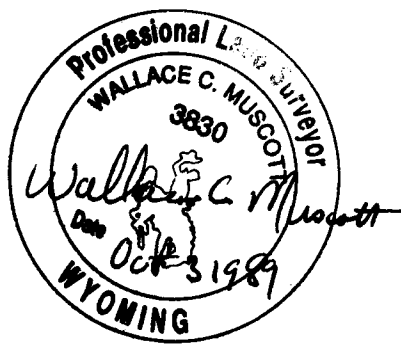
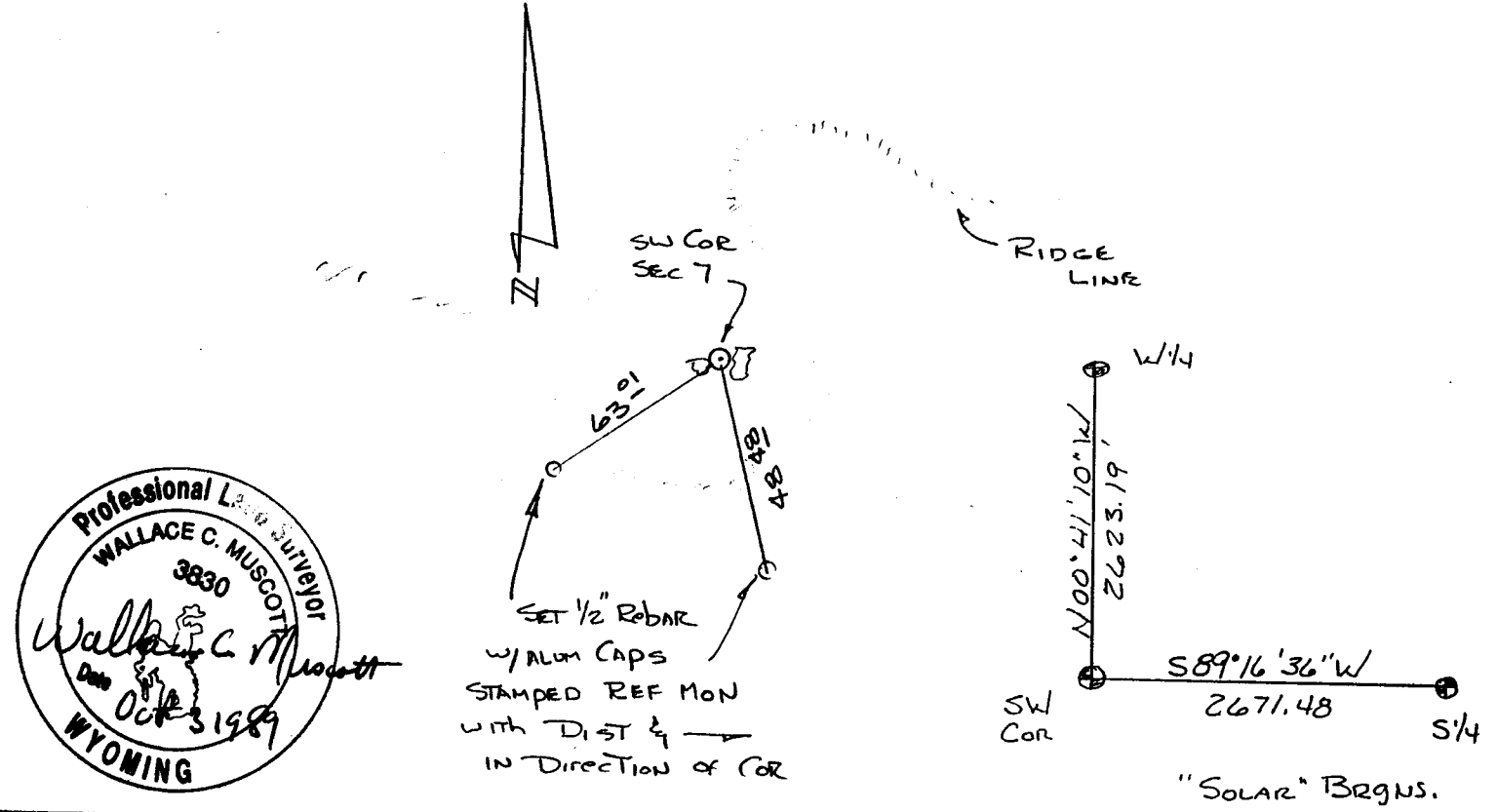
FOUND A LARGE SANDSTONE IN TWO PIECES, APPROX 20'x12'x8"  
W/ NO VISIBLE CHISEL MARKS & LYING FLAT.  
ORIGINAL CALL IS FOR SANDSTONE, 18"x12"x3". NO OTHER  
STONES WERE FOUND IN THE AREA. ACCEPTED THE STONE.

DESCRIPTION OF MONUMENT AND ACCESSORIES ESTABLISHED  
TO PERPETUATE THE ORIGINAL LOCATION OF THIS CORNER:

AT POINT WHERE STONE WAS FOUND, SET A 5/8" x 30" REBAR WITH  
A CORP OF ENGINEERS BRASS CAP AT TOP. PLACED FOUND STONE AROUND  
BASE & RAISED A MOUND OF STONE. TIED OFF AS SHOWN BELOW.

MAY 30, 1989

SKETCH, WITH COURSE AND DISTANCE TO ADJACENT CORNER IF DETERMINED IN THIS SURVEY.  
(May Sketch or Paste Reproduction on Reverse Side.)



I, WALLACE C MUSCOTT certify that I have carefully performed or reviewed the work done on the diagrammed corner as reported on this recordation form and approve the same.

Wallace C. Muscott  
Signature of Surveyor

3830  
Registration No.

STATE OF WYOMING,  
Office of Clerk and Recorder,  
County of \_\_\_\_\_

This "corner record" was filed for record on the \_\_\_\_\_ day of \_\_\_\_\_, 19\_\_\_\_, was noted on the cross-index plat and is assigned page No. \_\_\_\_\_, in book No. \_\_\_\_\_.

County Official			
Cross Index No. <u>J-1</u>	T. <u>18N</u>	R. <u>66W</u>	Mer.
_____	T. _____	R. _____	Mer.
_____	T. _____	R. _____	Mer.
_____	T. _____	R. _____	Mer.
_____	T. _____	R. _____	Mer.
_____	T. _____	R. _____	Mer.
_____	T. _____	R. _____	Mer.